



SURREY
COUNTY COUNCIL

Shere 2023 Consultation results

Introduction

Where it all started

In 2022 Surrey County Council (SCC) was asked to investigate the possibility of restricting vehicular access and introducing some outdoor dining and seating in the area known as 'The Square' in Shere.

Background and future studies

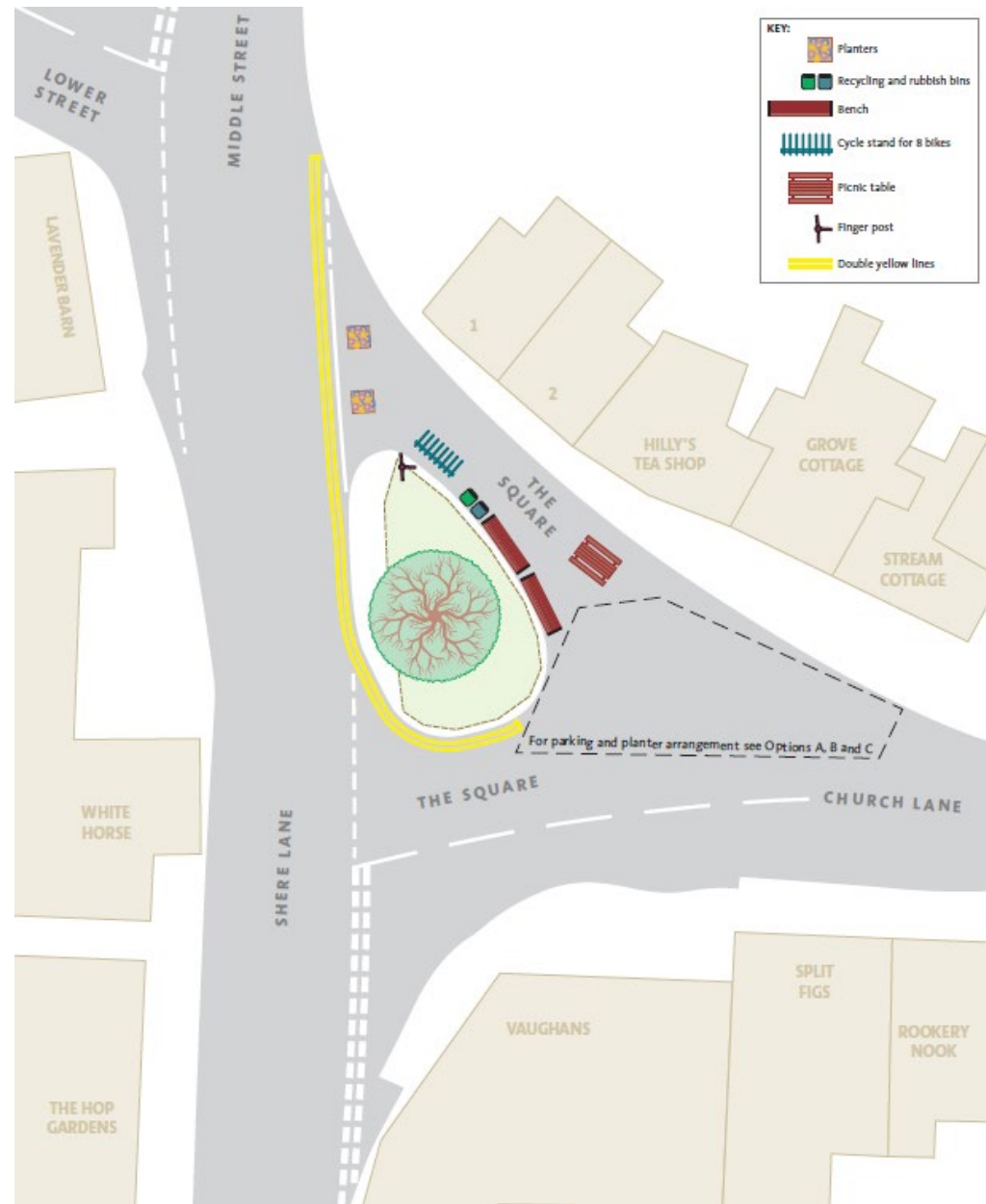
Towards the end of last year, we undertook a parking survey to see how the space was used. This was carried out over the weekend. It was found that:

- The maximum number parked at any one time was 7 vehicles between hours 2-3 pm.
- Around 10 cyclists blocked the parking bays for 10 minutes just after 10 am.
- 4 vehicles remained after 7pm when the survey ended

We have also applied 'Tracking' to all designs shown. This allows us to ensure that there is enough space for large vehicles (such as a refuse lorry) to turn up Church Lane.

After the consultation has ended and a final design selected, we will run this design past our Road Safety Team to ensure the proposals are safe for both pedestrians and vehicle users.

The proposals



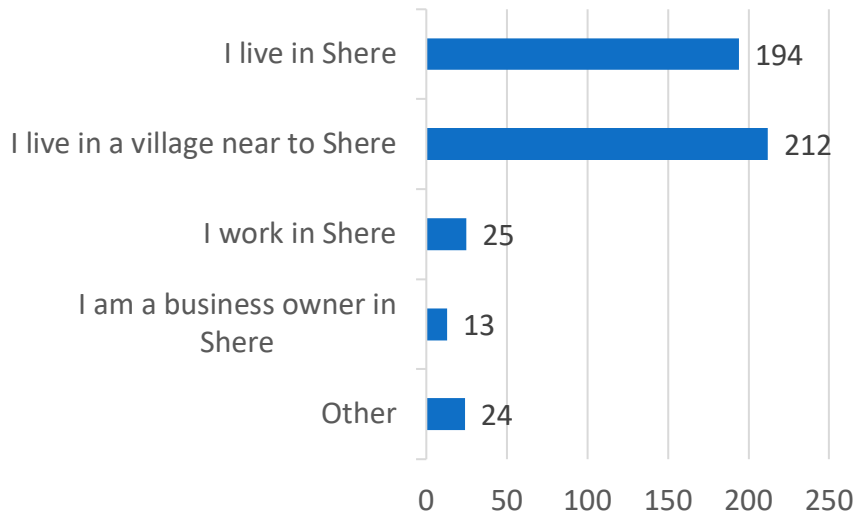
We offered three different design options and a do nothing option for members of the public to vote their favourite option

We want to introduce seating opportunities and outdoor dining opportunities as well as cycle stands, planters, recycling bins (for the coffee cups).

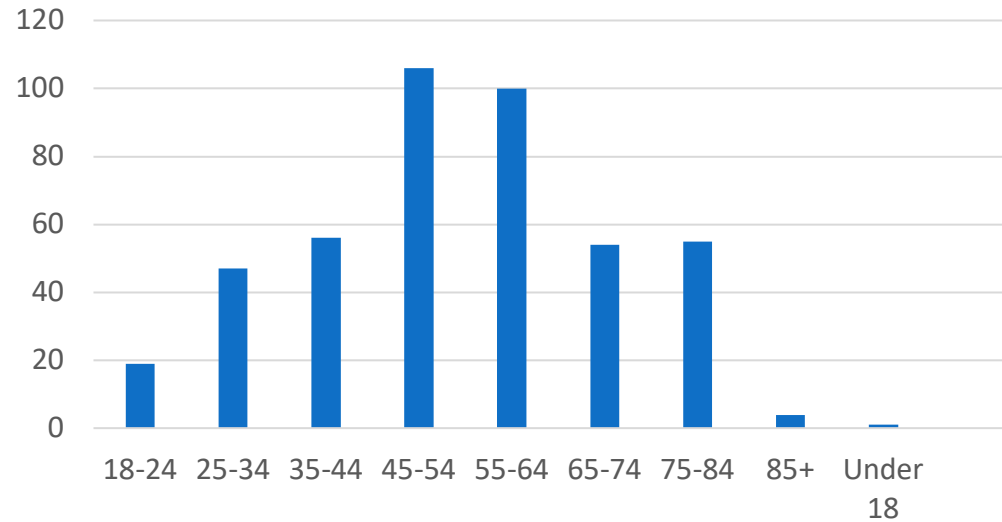
Demographics

The SurreySays Shere survey reached a range of participants with various connections to Shere. Participants were able to select more than one answer and out of those who provided a response (443), 194 participants stated that they live in Shere. Some participants who stated that they lived in a village near to Shere felt that they had strong connections with the village including – their children attending the local school, part of community groups in Shere, members of the Church in Shere, shop daily in Shere and are regular visitor of Shere.

What is your relationship to Shere?



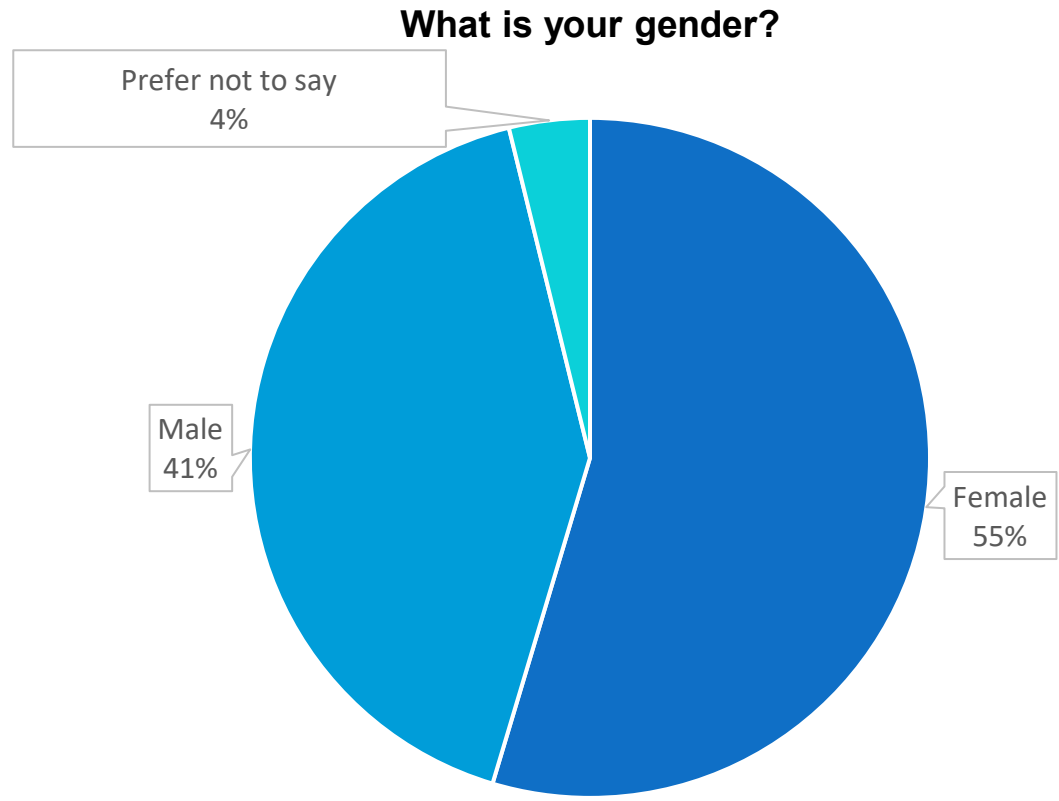
What age group are you in?



The majority of survey respondents who provided a response (319), were over 45, with 45-54 year olds having the highest response rate (106).

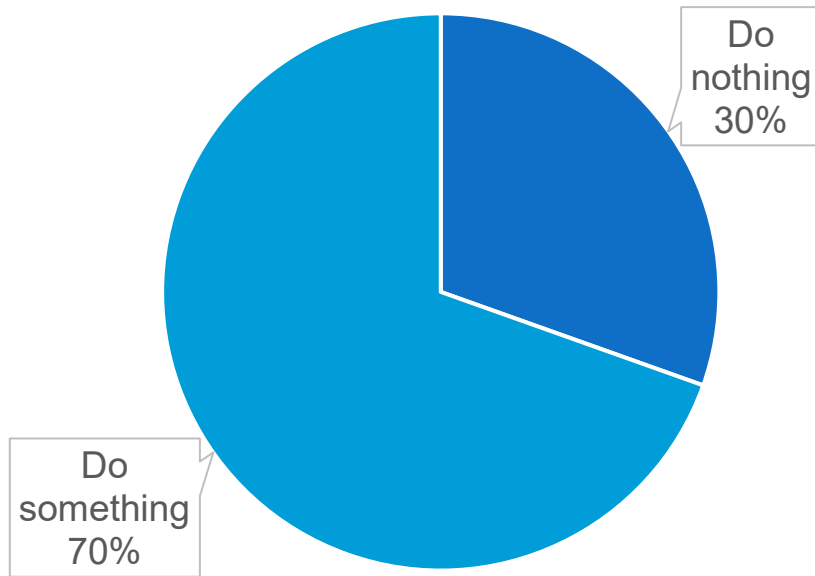
Demographics

In terms of response by gender, just over half (55%) identified as female (242), 41% as male (184) and 4% preferred not to say (17)

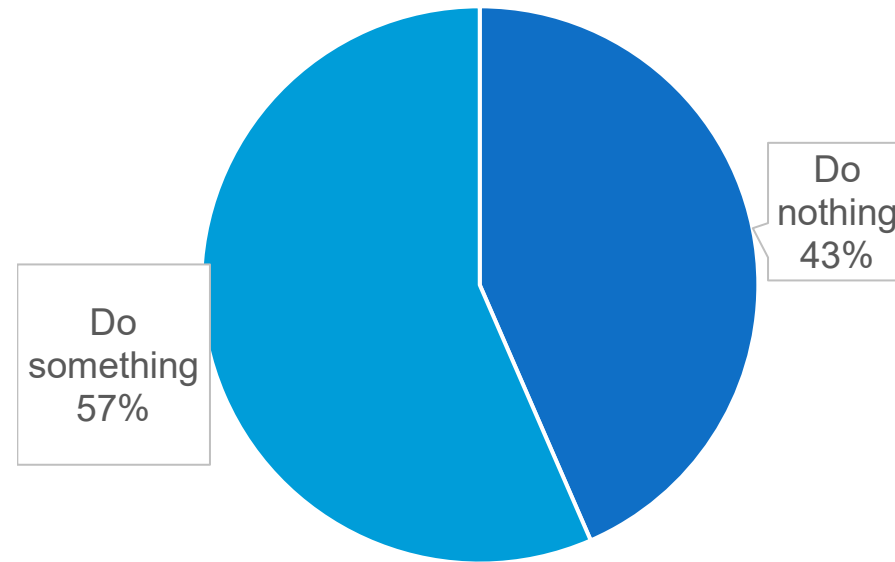


Total responses

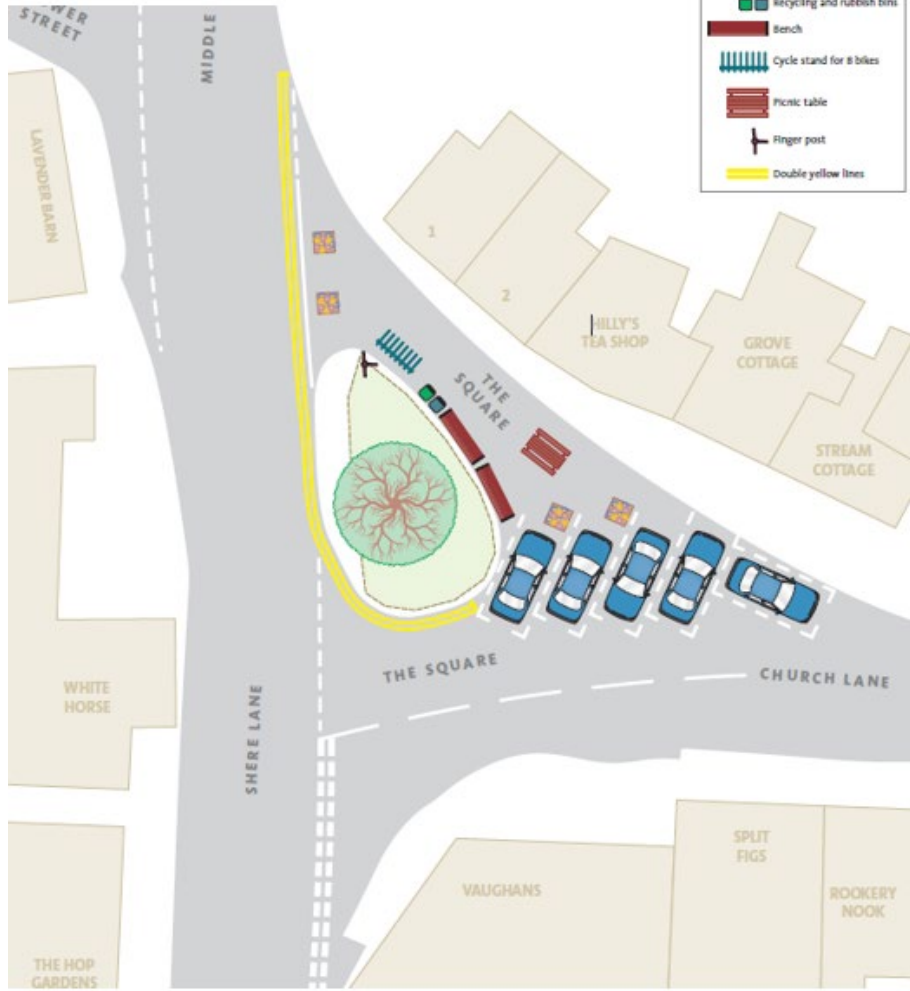
All results



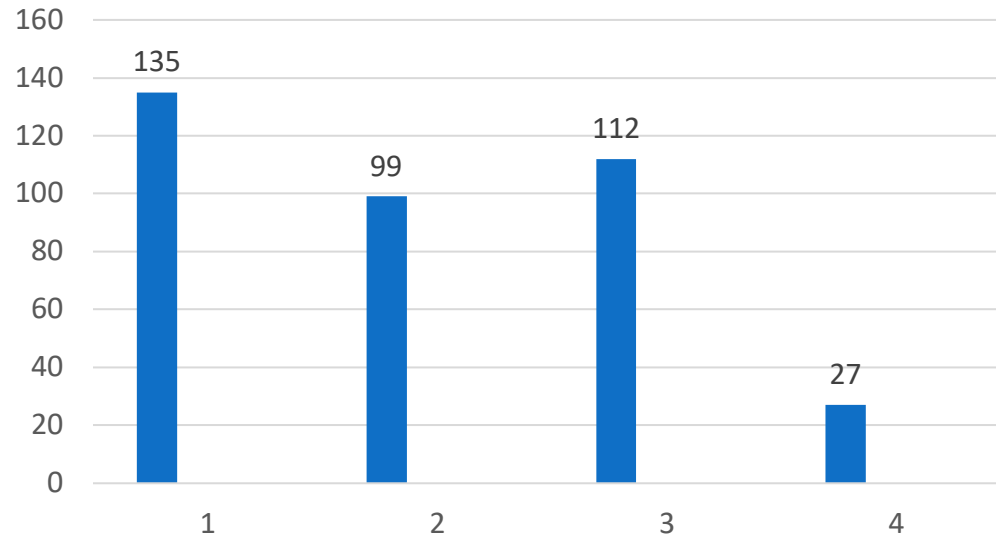
Villagers only



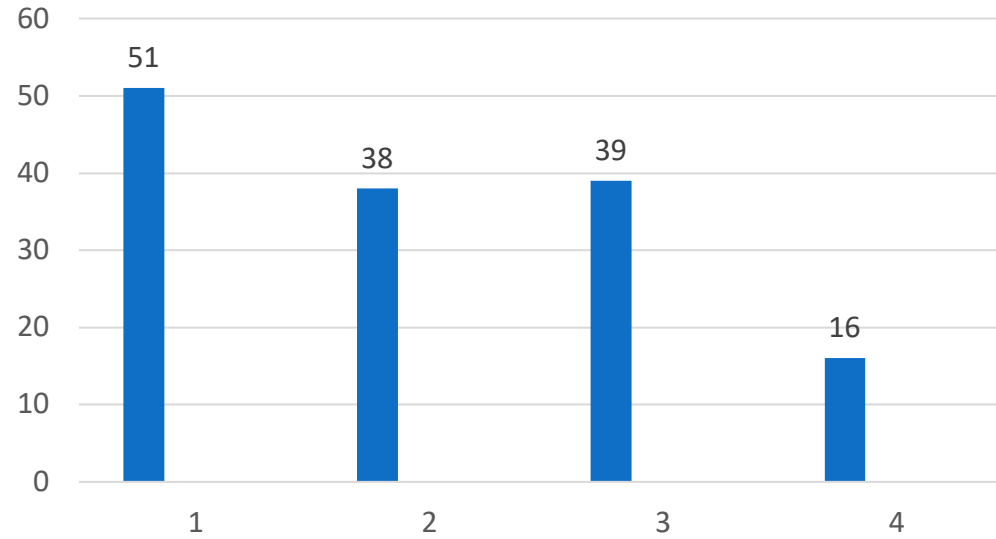
Option B



All results

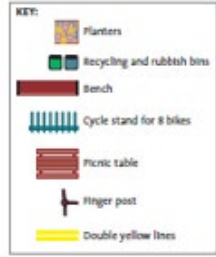
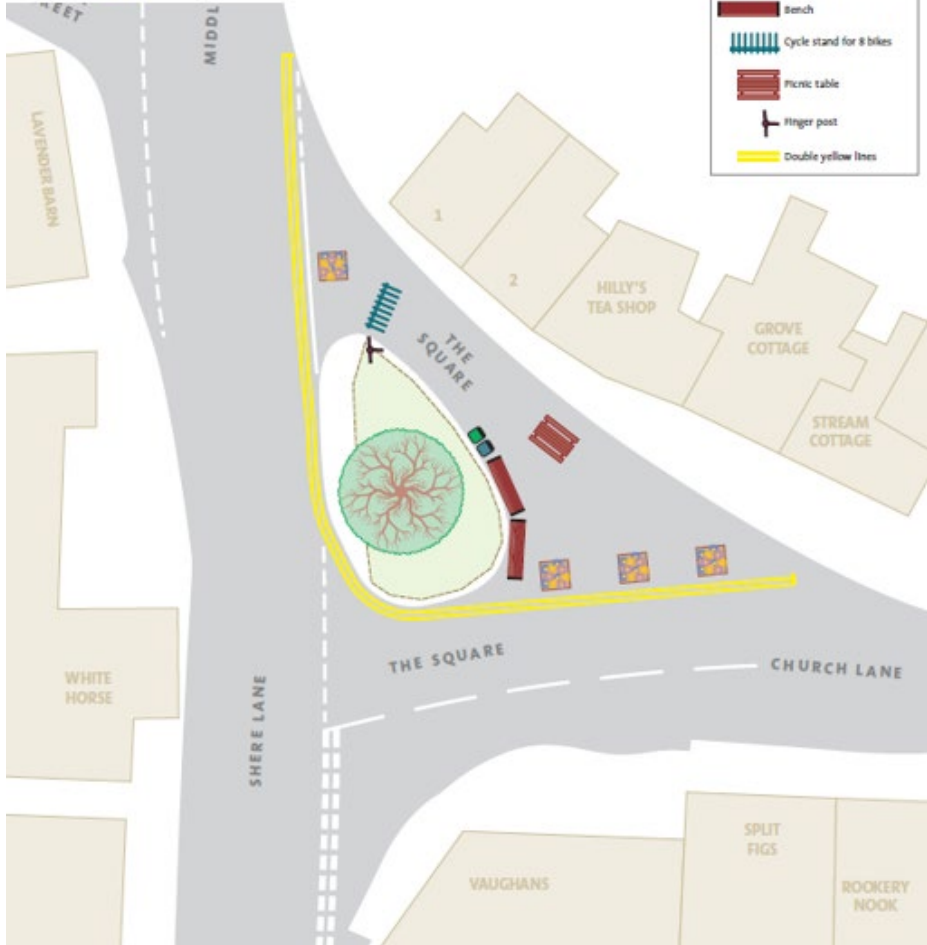


Those in the village

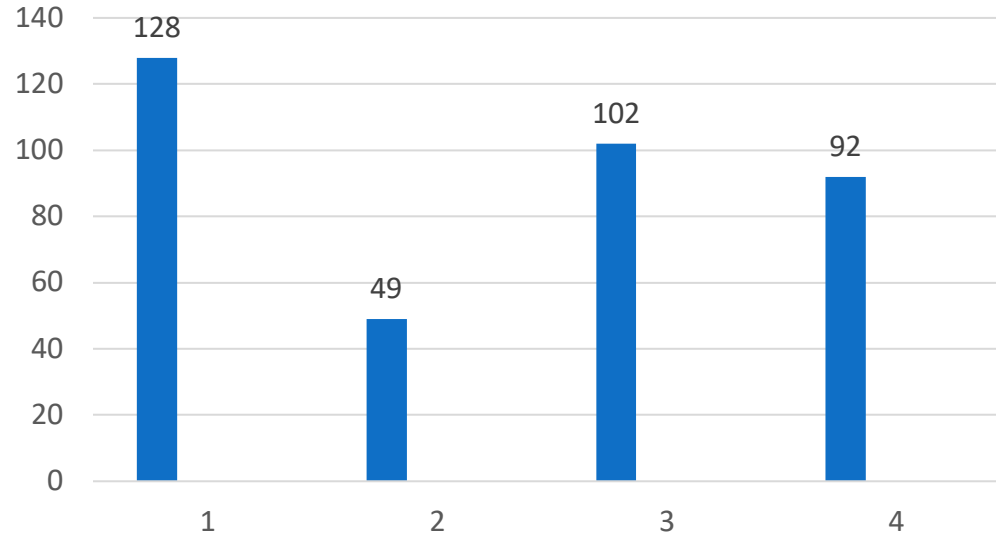


SURREY
COUNTY COUNCIL

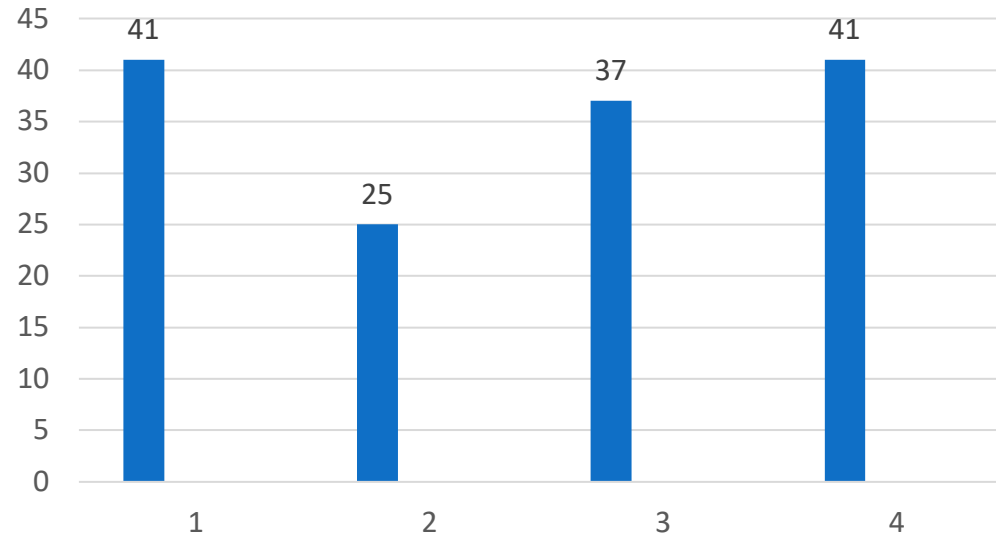
Option C



All results

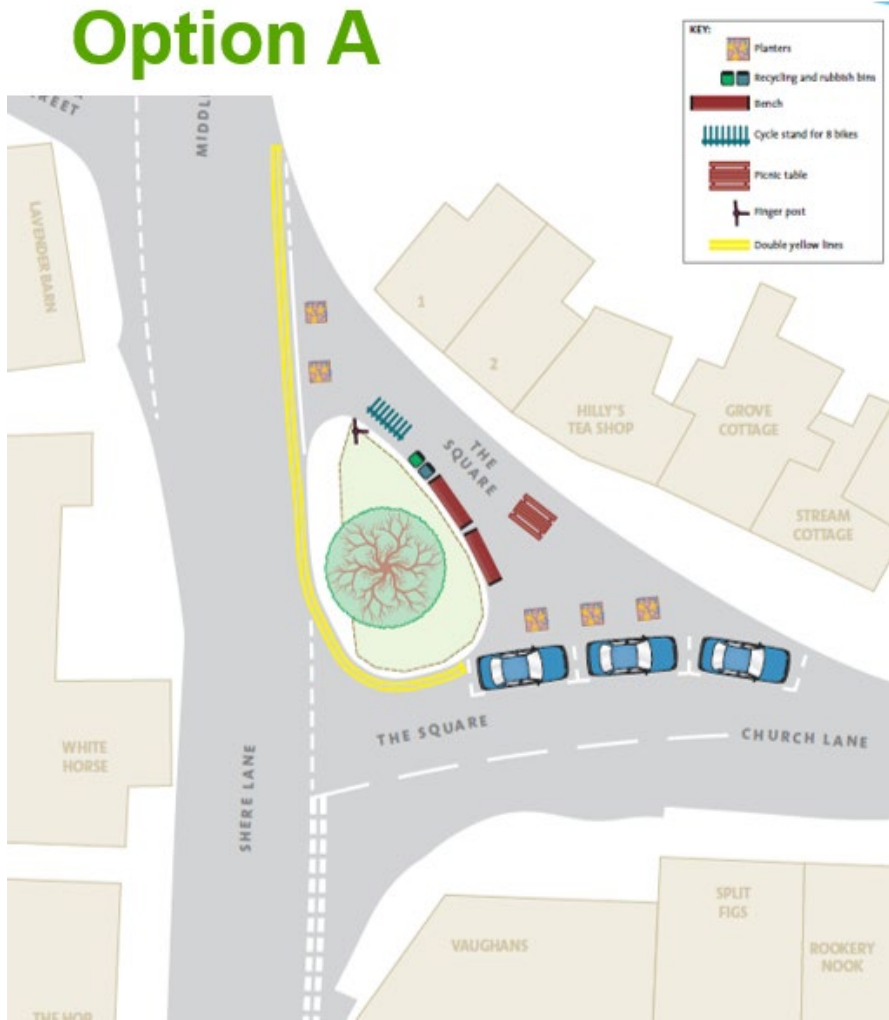


Those in the village

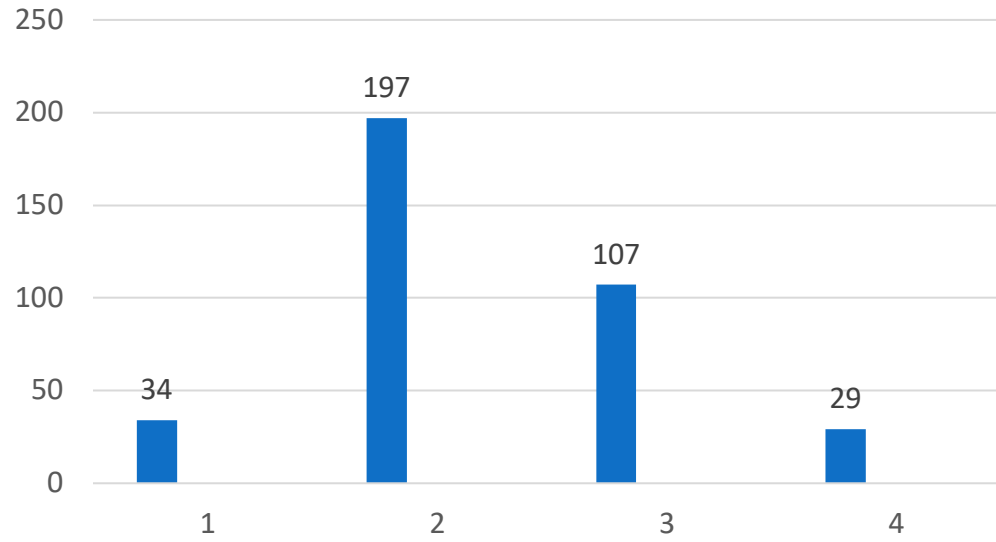


SURREY
COUNTY COUNCIL

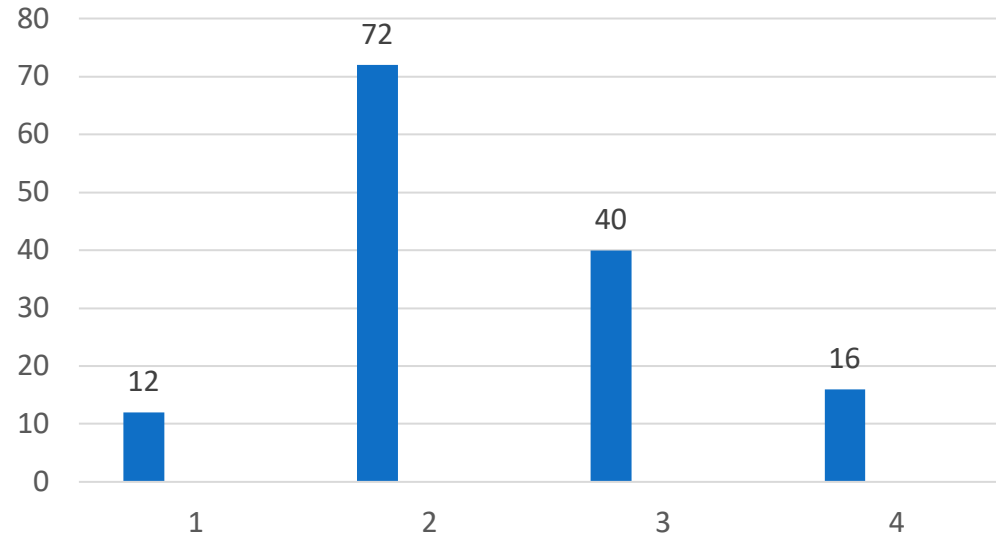
Option A



All results



Those in the village

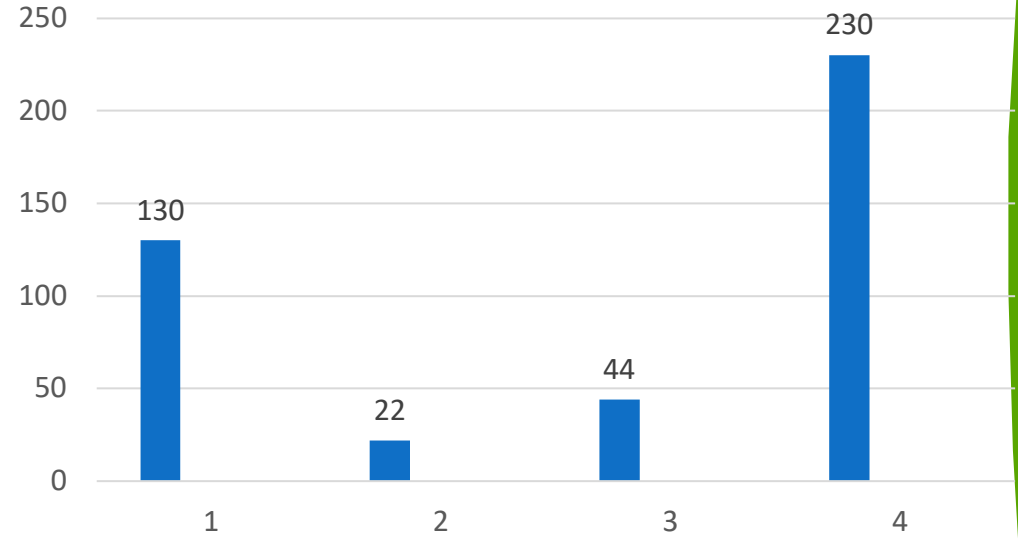


SURREY
COUNTY COUNCIL

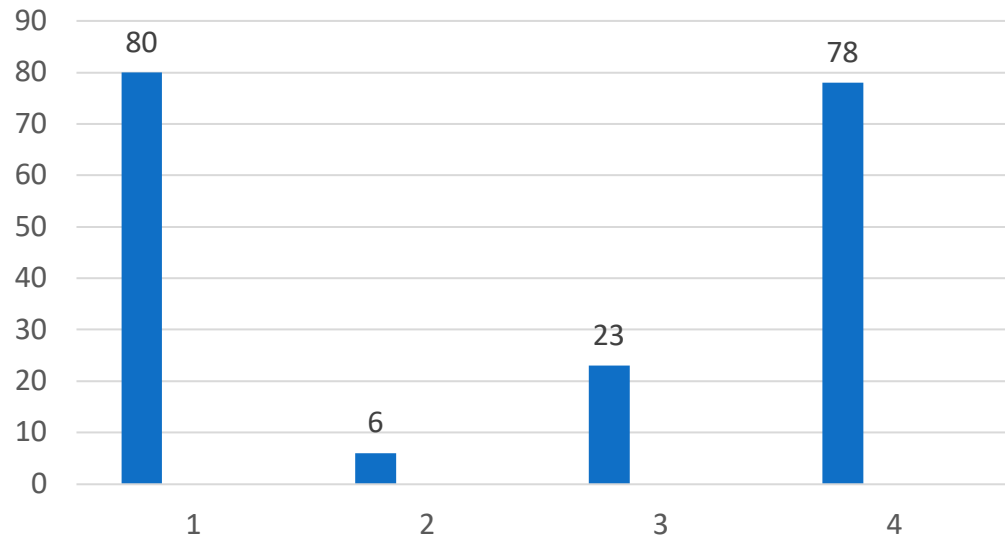
Final option – No Change



All results

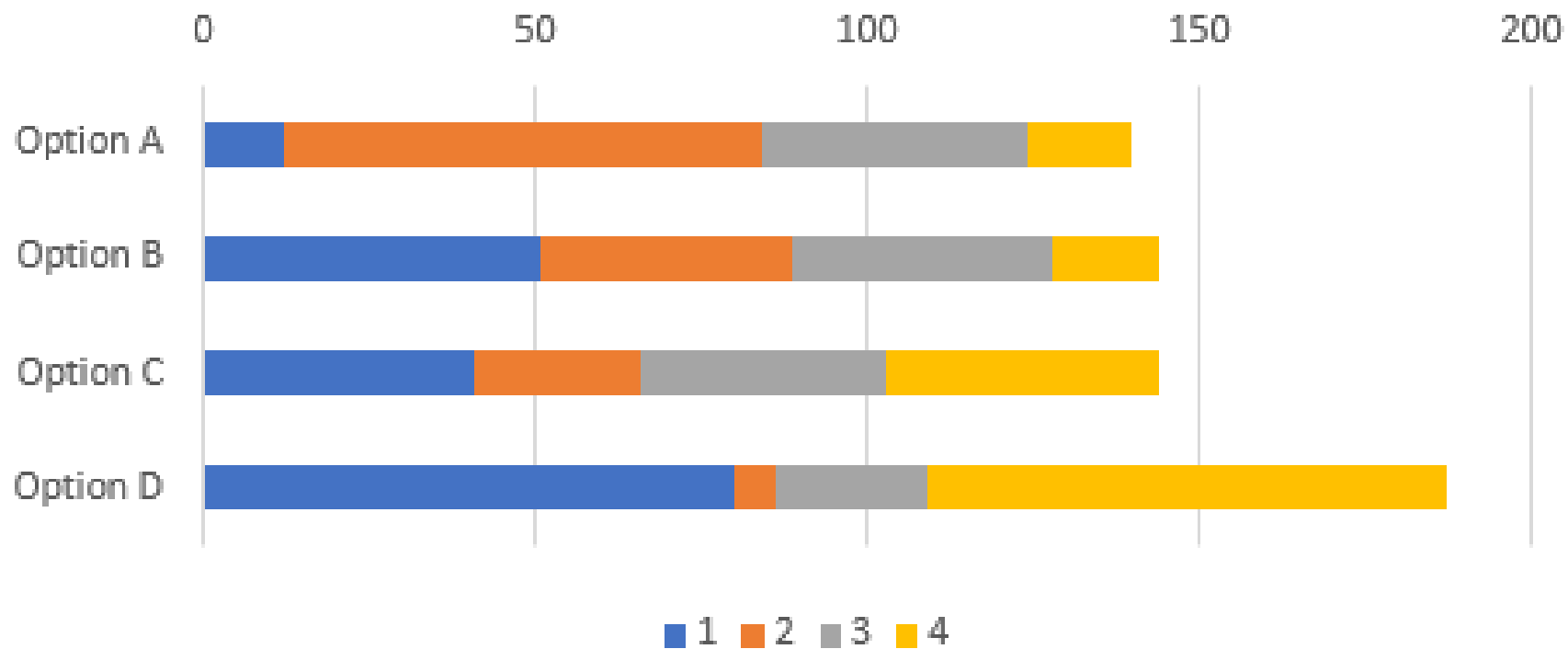


Those in the village



SURREY
COUNTY COUNCIL

Options based on Preference (Villagers Only)



What would you like to see in this space?



Questions?



SURREY
COUNTY COUNCIL